



## BIG SKY OWNERS ASSOCIATION

*Monthly Newsletter*



### BIG SKY OWNERS ASSOCIATION



## SAVE THE DATE

BSOA's 50th Anniversary  
Annual Meeting & Election



FRIDAY, AUGUST 26, 2022 | 3-5 PM

BIG SKY RESORT

RECEPTION TO FOLLOW FROM 5-7 PM

#### Mark your Calendars! BSOA's 50th Anniversary Annual Meeting and Election Approaches

In 1972, a group of Big Sky visionaries founded the Big Sky Owners Association, which would provide common area services and projects that benefit the community and preserve property value. Today, we remain committed to providing the highest level of service to our members and community. Please join us for the BSOA annual meeting and election on **August 26th, 2022 at 3 pm** in the Talus Room of the Summit Hotel. Reception to follow in the Huntly Dining Hall with refreshments and musical guest, Sam Bee! Election ballots will be dispersed in the mail at the end of July.



# A message from Big Sky Fire Department

**IT ONLY TAKES ONE SPARK  
TO START A WILDFIRE!**



**CELEBRATE RESPONSIBLY  
THIS HOLIDAY WEEKEND!**

## Wildfire Safety

**Prepare** - **REGISTER** to receive emergency notifications, specific time periods is an option.

**Plan** – Know when to leave, where to go, and how to get there “**Wildfire Action Guide**” (page 10).

**Prevent** – Big Sky Fire Department recommends no fireworks and most neighborhoods in Big Sky do not allow for fireworks. Visit **Big Sky Fire Department** for more information.

*Brought to you by Fire Adapted Big Sky and the Big Sky Fire Department*  
[For more information, visit here](#)

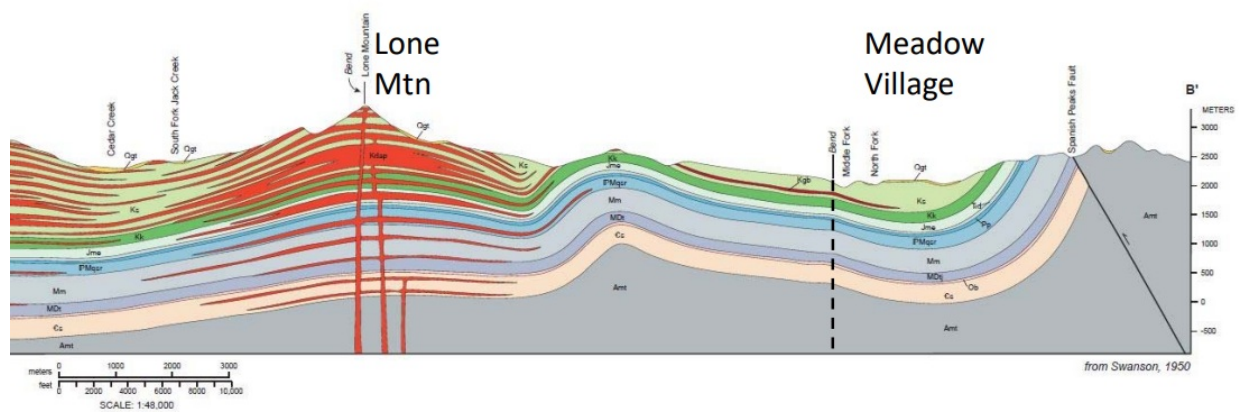
## Fireworks Canceled

This year's Independence Day will be fireworks-free. Major stakeholders in the community made a collective decision to forego public displays, due to ongoing drought conditions throughout Southwest Montana. Although we received significant moisture this spring, conditions can change quickly. Wildfires pose a significant risk to our community so this decision was made with prevention and safety in mind.

**[See Full Text Here](#)**



## Sustainability Spotlight



## What Lies Beneath: Big Sky's Ancient History

What is Big Sky's geology made up of and how does it impact our daily life? From endless ski and bike terrain to river basins and valleys, we are lucky to call this place home. Not only does Big Sky's terrain offer diverse opportunities to recreate, the ground beneath us has a sandstone layer that provides our drinking water. A recent study from the MT Bureau of Mines and Geology shows the make-up of underground formations in an effort to analyze groundwater availability in Big Sky. There are many faults, folds, and uplifts that tell a complex story. Lone Peak is a perfect example of igneous rock intruding into a sandstone layer, which occurred about 68 millions years ago. Did you know the Spanish Peaks gneiss formation is 1.6 billion years old?

The MBMG study analyzed 2,400 feet (depth) of bedrock in various areas and cross-sections from Meadow Village to Moonlight Basin. Only about 20% of the bedrock is available to house usable water. Historically, fault lines and folds along Spanish Peaks created significant restriction and displaced bedrock aquifers. The only section of available water within the identified layers comes from the Kootenai formation.

### Here are some key takeaways:

- All ground and surface water regularly interact.
- Three to five-foot thick Sandstone formations hold the best groundwater in Meadow and Mountain Village.
- Surface and subterranean shales make up a majority of Big Sky's geology. With that said, these shales are not water-bearing and lead to landslides very easily.
- Spring is the only time of year that the aquifers recharge from snowmelt, therefore snowmelt is the primary water source for Big Sky.
- Groundwater supports river surface water, after the spring snowmelt ends.
- Groundwater and surface water interactions mean that both can be affected by contamination.
- Depending on where a new well is drilled, Big Sky is a difficult place to find acceptable freshwater flows because of the variable terrain and surface shales.

### Conclusion:

To bring it full circle, the findings of the 2013 groundwater study make it very clear that access to water resources in Big Sky are limited and finite, even if you have a private well. With this in mind, there are so many ways you can conserve water, especially during the summer months. Some examples include: updating your landscape plan, limiting the use of sod and irrigation, investing in drip lines instead of sprinklers, watering at night or early in the morning, installing water-efficient appliances, slowing your flow at the faucet, skipping the car wash, or using rain sensors for lawn watering. These are just a few examples. We encourage our members to be conscious of their water usage and we thank you for being a responsible property owner.

[View the full study here](#)

Pictured above: Geologic Cross Section from Groundwater Availability Study. Vuke, 2013.





Spotted in Cascade, June 2022

Please ensure wildlife do not have access to food rewards on your property. Wildlife are active this time of year, especially bears. It is dangerous for both wildlife and people. If you need to report a bear incident please call our office or notify Fish, Wildlife, & Parks. The safety of your pets, you, and our four-legged cohabitants depends on your participation and cooperation. Thank you for being good neighbors.

## How is wastewater handled in Big Sky?

Moonlight Basin (MLB) Wastewater Treatment Plant #2 is an excellent showcase of sustainable wastewater management. They use a method called Membrane Bioreactors (MBRs), commonly understood as **the combination of membrane filtration and biological treatment using activated sludge**. Big Sky Water and Sewer District's new wastewater treatment plant in Meadow Village will also have this technology.

Wastewater is sent through various filters and naturally-occurring bacteria eat away at the excess nutrients, like nitrogen and phosphorous, two major contributors to algae blooms. Biosolids from wastewater are repurposed as fertilizer for alfalfa farming in Four Corners. Eventually, the biosolid composting operation in MLB Plant #2 will expand to serve local needs for healthy soil. The end result is filtered, clean water that is applied to the golf course in Moonlight Basin. This treated water will not introduce excess nutrients to our watershed and nothing in this system is wasted.



[Learn more here](#)

## Upcoming Events

July 2, 2022: Big Sky Artesian Festival | Len Hill Park | 9 AM - 5 PM

July 4, 2022: July 4th Celebration; Music in the Mountains | Len Hill Park | 6 PM - 10 PM

July 7, 2022: BSAC Meeting | Virtual | 9 AM

July 8, 2022: **RESCHEDULED** BSOA Board of Directors Meeting | Virtual | 9 AM

July 11, 2022: Big Sky Zoning Advisory Board Meeting | WSD Board Room | 9:30 AM

July 14, 2022: Gallatin County Planning & Zoning Commission | Virtual/Bozeman Office | 9 AM

July 19, 2022: Water & Sewer District Meeting | WSD Board Room | 8 AM

## Have you moved?

Call or email our office to update your preferred contact information.

**Contact | BSOA FAQs | Community Calendar | Numbers to Know**

Big Sky Owners Association | 145 Center Lane, Unit J, PO Box 160057, Big Sky, MT 59716

[Unsubscribe bsoa@bigskyoa.org](mailto:bsoa@bigskyoa.org)

[Update Profile](#) | [Constant Contact Data Notice](#)

Sent by [bsoa@bigskyoa.org](mailto:bsoa@bigskyoa.org) in collaboration  
with



Try email marketing for free today!