





WGM GROUP  
WWW.WGMGROUP.COM

BID SET

PLOTTED: 4/28/22  
SAVED: 4/27/22

STAGING AREA AND HAUL ROUTES  
WEST FORK RESTORATION AND POND ENHANCEMENT  
BIG SKY, MONTANA

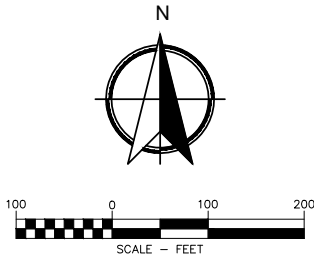
REVISIONS:		
NO.	DESCRIPTION	DATE

PROJECT: 21-02-21  
LAYOUT: SHT 07  
SURVEYED: WGM GROUP/LIDAR  
DESIGN: HTM/JWD  
DRAFT: DEB  
APPROVE: MAM  
DATE:

APRIL 29, 2022

SHEET

7 OF 34



FILE: W:\Projects\210221\CAD Data\Design\210221 SP.dwg



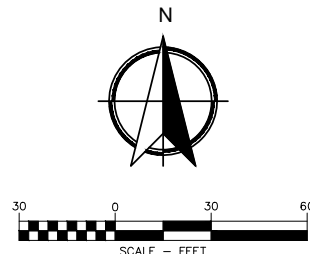


LEGEND-PROPOSED

- EDGE OF ASPHALT
- ASPHALT
- PROPOSED BUILDING
- NEWLY CONSTRUCTED FLOODPLAIN
- ENHANCED FLOODPLAIN
- RECLAIMED DREDGE MATERIAL
- PROPOSED ADA RAMP
- PROPOSED BERM
- CENTERLINE OF STREAM
- CONTOUR (1 FOOT INTERVAL)
- PROPOSED WATER LINE
- PROPOSED SEWER LINE
- EDGE OF BANK
- EDGE OF POND
- HEADGATE
- OUTLET CULVERT
- PROPOSED BOARDWALK/TRAIL ON TOP OF BERM
- RETAINING WALL
- POST ASSISTED LOG STRUCTURE (PALS)

POND AMENITIES NUMBER KEY:

- 1 BEACH: SHALLOW ENTRY AND EXTENSION INTO POND  
2135 SQUARE FEET SUBSURFACE SAND AREA, 0-3' DEPTH RANGE  
1678 SQUARE FEET BEACH CHAIR AREA
- 2 BEACH:  
3225 SQUARE FEET SUBSURFACE SAND AREA, 0-5' DEPTH RANGE  
1742 SQUARE FEET BEACH CHAIR AREA
- 3 FISHING PENINSULA
- 4 FISHING DOCK  
(EVALUATE FLOATING VS. PERMANENT STRUCTURE)
- 5 PICNIC AREA: ROOM FOR 2 PICNIC TABLES, RESTROOM AND GARBAGE ENCLOSURE
- 6 TRAILS  
ADA BOARDWALK TRAIL NETWORK EXTENDING FROM PARKING AREA TO BEACH 1, PICNIC AREA AND FISHING DOCK; FROM BEACH AREA 1 TO FISHING PENINSULA AND BEACH AREA 2.  
BENCHES/SITTING AREA - ALONG TRAILS
- 7 PARKING  
ONE ADA PARKING SPOT PLUS 4-5 OTHERS
- 8 ROCK TERRACE  
3' FACE ON 4'X6' STONE, WITH 1' OVERLAP
- 9 FISH SPAWNING CHANNEL



BID SET  
PLOTTED: 4/28/22  
SAVED: 4/27/22

SITE PLAN - LITTLE COYOTE POND  
WEST FORK RESTORATION AND POND ENHANCEMENT  
BIG SKY, MONTANA

REVISIONS:		
NO.	DESCRIPTION	DATE

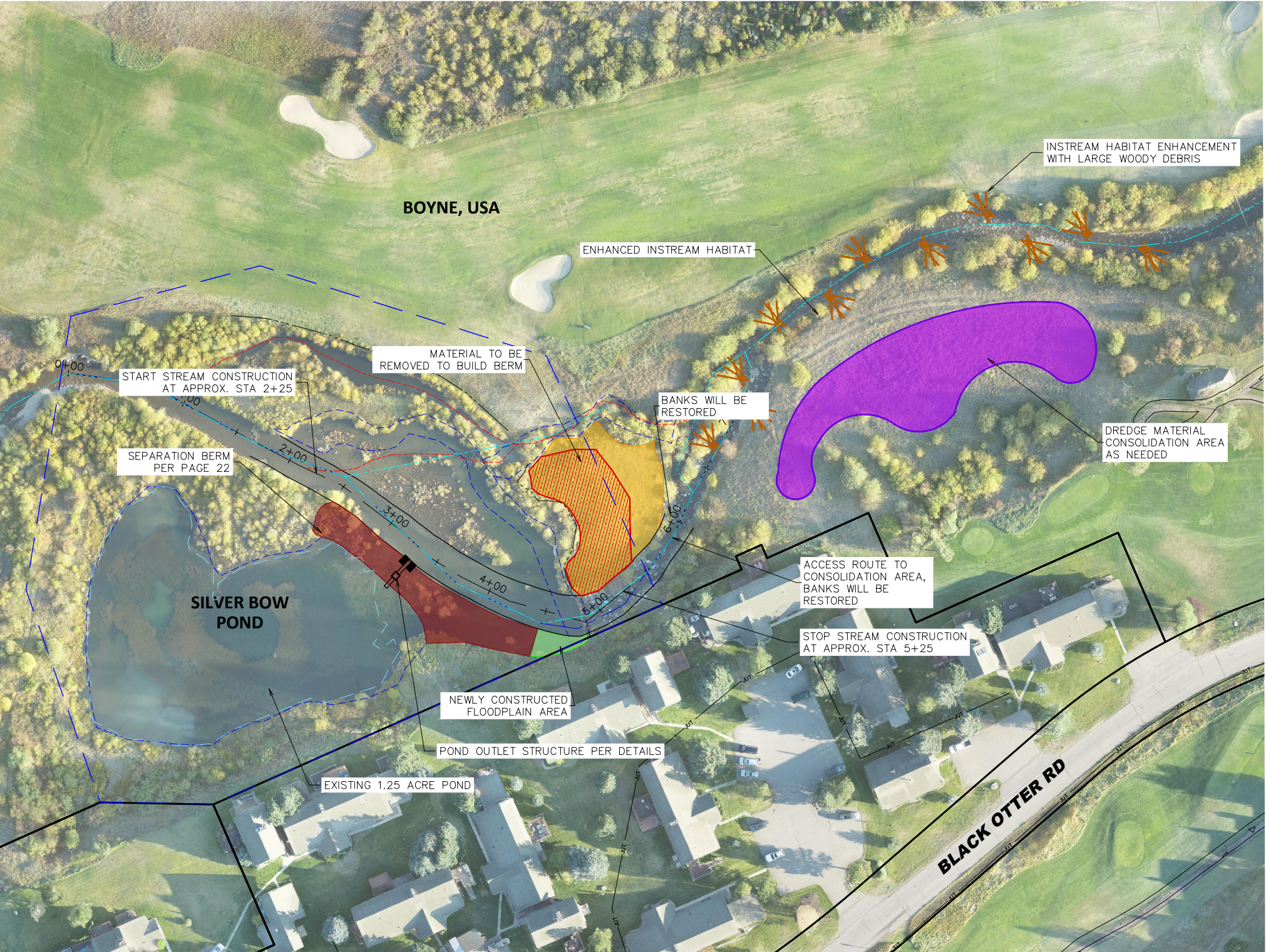
PROJECT: 21-02-21  
LAYOUT: SHT 08  
SURVEYED: WGM GROUP/LIDAR  
DESIGN: HTM/JWD  
DRAFT: DEB  
APPROVE: MAM  
DATE:

APRIL 29, 2022

SHEET

FILE: W:\Projects\210221\CAD Data\Design\210221 SP.dwg





LEGEND-PROPOSED

- EDGE OF ASPHALT
- ASPHALT
- PROPOSED BUILDING
- NEWLY CONSTRUCTED FLOODPLAIN
- ENHANCED FLOODPLAIN
- RECLAIMED DREDGE MATERIAL
- PROPOSED ADA RAMP
- PROPOSED BERM
- CENTERLINE OF STREAM
- CONTOUR (1 FOOT INTERVAL)
- PROPOSED WATER LINE
- PROPOSED SEWER LINE
- EDGE OF BANK
- EDGE OF POND
- HEADGATE
- OUTLET CULVERT
- PROPOSED BOARDWALK/TRAIL ON TOP OF BERM
- RETAINING WALL
- POST ASSISTED LOG STRUCTURE (PALS)



BID SET

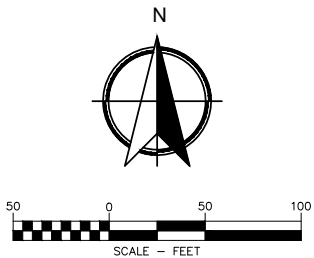
PLOTTED: 4/28/22  
SAVED: 4/27/22

SITE PLAN - SILVERBOW POND  
WEST FORK RESTORATION AND POND ENHANCEMENT  
BIG SKY, MONTANA

REVISIONS:		
NO.	DESCRIPTION	DATE

PROJECT: 21-02-21  
LAYOUT: SHT 15  
SURVEYED: WGM GROUP/LIDAR  
DESIGN: HTM/JWD  
DRAFT: DEB  
APPROVE: MAM  
DATE:

APRIL 29, 2022



FILE: W:\Projects\210221\CAD Data\Design\210221 SP.dwg