

# Big Sky Architectural Committee

## Meeting Agenda

---

October 4, 2018 8:00 A.M.

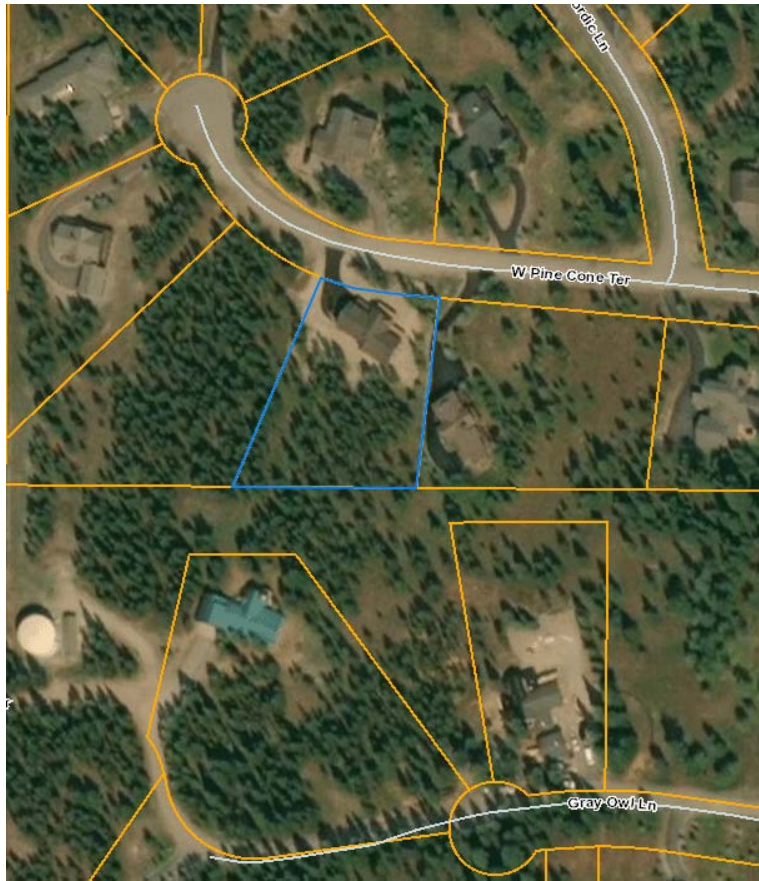
	<u>Presenter</u>	<u>Action</u>
<b>1. Membership Forum</b>	Brian Wheeler, Chair	
<b>2. Call to Order</b>	Brian Wheeler, Chair	
<b>3. Meeting Minutes – September 20, 2018 BSAC</b>	Brian Wheeler, Chair	<b>Discuss/Motion</b>
<b>4. Landscape Alterations:</b>	Janet Storey, Staff	<b>Discuss/Motion</b>
<u>BSOA # 04205 Kim &amp; Westfall Hot Tub Screening</u>		
Legal: Cascade Subdivision Block 1, Lot 42		
Street: White Otter Rd.		
 <u>BSOA #07506 Olson/BSCO Bike Directional Sign</u>		
Legal: North Fork Creek Subdivision, Plat J-247		
Street: Andesite Rd.		
 <u>BSOA # 02726 Palmer Landscape Alterations</u>		
Legal: Aspen Groves, Block C, Lot 26		
Street: 168 W. Pine Cone Terrace		
<b>5. SFR Final Plan Review</b>	Janet Storey, Staff	<b>Discuss/Motion</b>
<u>BSOA #06296 Wisnieski Single Family Residence</u>		
Legal: Cascade Subdivision Block 4, Lot 296		
Street: TBD White Grass Rd.		
<b>6. Alterations to Approved Plans</b>	Janet Storey, Staff	<b>Discuss/Motion</b>
<u>BSOA #02811 SF10 LLC Single Family Residence</u>		
Legal: Aspen Groves Subdivision, Block D, Lot 11		
Street: TBD Nordic Lane		
 <u>BSOA # #04301 Kurth Alteration to Approved Plan</u>		
Legal: Meadow Village Subdivision Block 3 Lot 1		
Street: TBD Two Moons Rd.		
<b>7. Construction Extension Request:</b>	Janet Storey, Staff	<b>Discuss/Motion</b>
<u>BSOA #06192A Wilkinson Landscape Extension</u>		
Legal: Cascade Subdivision Blk 3, Lot 192A		
Street: 8 Little Plume Rd.		
<b>8. Discussion Items:</b>		
a. Review Fee Revision Review	Suzan Scott, Staff	
b. Member Report Tracking Update	Janet Storey, Staff	
c. Performance Deposit Tracking Update		
d. Certificates of Deposit Update		
e. Adjourn	Brian Wheeler, Chair	



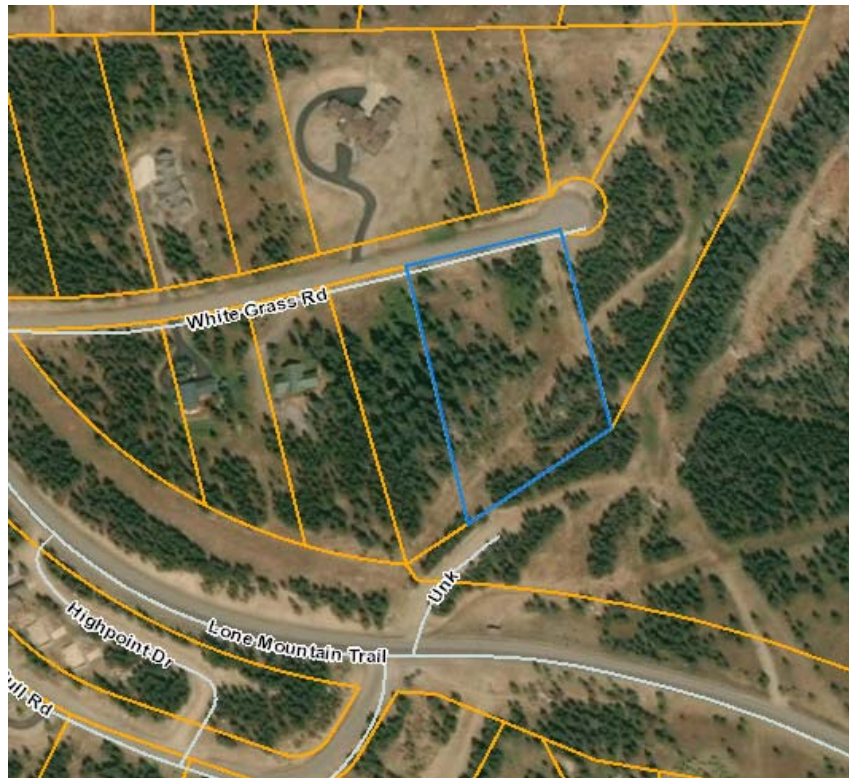
**Westfall Landscape Alterations**



**Olson/BSCO Bike Directional Sign**



**Palmer Landscape Alterations**



**Wisnieski Single Family Residence**



**SF10 LLC Single Family Residence**



**Kurth Alteration to Approved Plan**



**Wilkinson Landscape Completion Extension**